



This is a digital copy of a book that was preserved for generations on library shelves before it was carefully scanned by Google as part of a project to make the world's books discoverable online.

It has survived long enough for the copyright to expire and the book to enter the public domain. A public domain book is one that was never subject to copyright or whose legal copyright term has expired. Whether a book is in the public domain may vary country to country. Public domain books are our gateways to the past, representing a wealth of history, culture and knowledge that's often difficult to discover.

Marks, notations and other marginalia present in the original volume will appear in this file - a reminder of this book's long journey from the publisher to a library and finally to you.

Usage guidelines

Google is proud to partner with libraries to digitize public domain materials and make them widely accessible. Public domain books belong to the public and we are merely their custodians. Nevertheless, this work is expensive, so in order to keep providing this resource, we have taken steps to prevent abuse by commercial parties, including placing technical restrictions on automated querying.

We also ask that you:

- + *Make non-commercial use of the files* We designed Google Book Search for use by individuals, and we request that you use these files for personal, non-commercial purposes.
- + *Refrain from automated querying* Do not send automated queries of any sort to Google's system: If you are conducting research on machine translation, optical character recognition or other areas where access to a large amount of text is helpful, please contact us. We encourage the use of public domain materials for these purposes and may be able to help.
- + *Maintain attribution* The Google "watermark" you see on each file is essential for informing people about this project and helping them find additional materials through Google Book Search. Please do not remove it.
- + *Keep it legal* Whatever your use, remember that you are responsible for ensuring that what you are doing is legal. Do not assume that just because we believe a book is in the public domain for users in the United States, that the work is also in the public domain for users in other countries. Whether a book is still in copyright varies from country to country, and we can't offer guidance on whether any specific use of any specific book is allowed. Please do not assume that a book's appearance in Google Book Search means it can be used in any manner anywhere in the world. Copyright infringement liability can be quite severe.

About Google Book Search

Google's mission is to organize the world's information and to make it universally accessible and useful. Google Book Search helps readers discover the world's books while helping authors and publishers reach new audiences. You can search through the full text of this book on the web at <http://books.google.com/>

N
628
.56
A4
no. 40

B 912,504

SMITH COLLEGE MUSEUM OF ART

NO. 40 *Bulletin* 1960



THE UNIVERSITY
OF MICHIGAN

JUN 24 1970

LIBRARY

NORTHAMPTON MASSACHUSETTS

SMITH COLLEGE MUSEUM OF ART

NO. 40 *Bulletin* 1960

FOR THE COLLEGE YEAR JULY 1, 1959—JUNE 30, 1960

CONTENTS

<i>Unpublished Works and Recent Acquisitions</i>	ROBERT O. PARKS	1
<i>Exhibitions</i>		92
<i>Publications</i>		92
<i>Accessions</i>		93
<i>Donors of Objects</i>		104
<i>Donors of Funds</i>		105
<i>Staff, Committees, Faculty</i>		106

COVER: John Constable. English, 1776–1837. *The Thompson Brothers Fishing*, about 1818–20. Oil on canvas, 54 $\frac{1}{8}$ × 60 $\frac{1}{8}$ inches. Given by Adeline F. Wing '98 and Caroline R. Wing '96 (1960:40)

Copyright 1960 by the Smith College Museum of Art
Printed by The Stinehour Press

NORTHAMPTON MASSACHUSETTS

UNPUBLISHED WORKS AND RECENT ACQUISITIONS

OUR ANNUAL *Bulletin*, No. 40, is given the form of a picture-book. It contains illustrations of a number of works of art that we have never published before, although certain ones among them have belonged to the College for some years and although a few have been published elsewhere. In addition, our recent accessions are announced here and as many as possible are illustrated for the first time in the following pages.

Then this *Bulletin* does two things: it discloses more or less hidden resources and suggests the need for and result of periodic review and reappraisal of our collection. At the same time it suggests the rapid growth and increasing breadth of the collection and makes implicit the constantly widening range of its usefulness to students in Northampton and elsewhere.

The Museum staff is glad to provide, to receive and to exchange information regarding questions of the attribution, history, publication, date, iconography, morphology and physical condition of works of art in the collection.

A key to the location of the inscriptions we have included in the captions in this *Bulletin* may be useful: l.l. means lower left; l.r. means lower right; l.c. means lower center; etc. Dimensions are given in the following order: height; width; depth.

The halftone reproductions have been made from photographs by—or supplied by—the following:

Oliver Baker: 75

Eugene Brenwasser: 59

Frick Art Reference Library: 30

Marjorie de Wolf Laurent: 20, 27, 52, 61, 66, 80, 84, 85

Herbert P. Vose: 1-19, 21, 23-26, 28, 29, 31-51, 53-55, 58, 60, 62-65, 67-74, 76-79, 81-83, 86-91

Otto Wertheimer: 22

Wildenstein & Co., New York: 56, 57

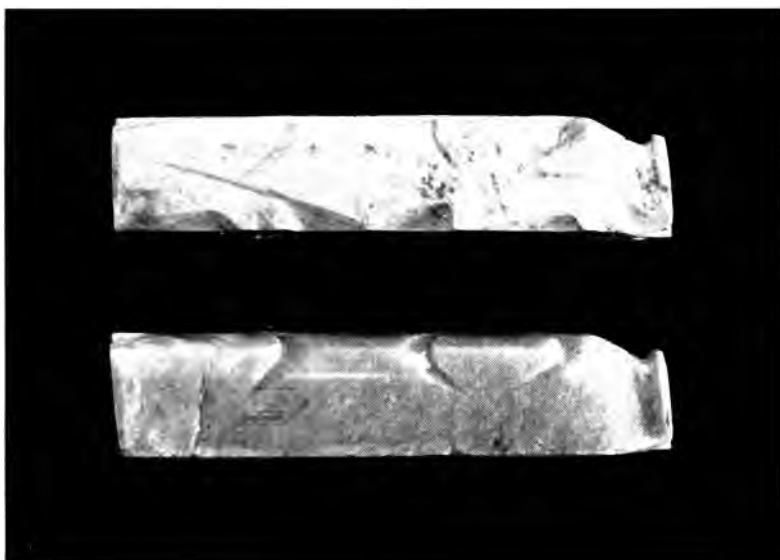
ROBERT O. PARKS
Director of the Museum



1. Chinese (Shang), about 1525-1028 B.C. *Horned Owl*. Jade, $1\frac{3}{4} \times \frac{7}{8} \times \frac{5}{16}$ inches. Given by Mr. and Mrs. Ivan B. Hart (1959:242-1). Illustrated at actual size



2. Chinese (Shang), about 1525-1028 B.C. *Pendant: Long-crested Bird.* Jade, $2\frac{1}{2} \times 2 \times \frac{3}{8}$ inches. Given by Mr. and Mrs. Ivan B. Hart (1959:242-6). Illustrated at actual size



3. Chinese (Late Chou), 403-221 B.C. *Pair of Shroud Weights: Reclining Pigs*. Jade, each $\frac{7}{8} \times 4\frac{1}{8} \times 1\frac{1}{8}$ inches. Given by Mr. and Mrs. Ivan B. Hart (1959: 242-5)



4. Chinese (Early Chou), 1122-771 B.C. *Pendant: Long-crested Bird*. Jade, $2 \times 1\frac{1}{2} \times \frac{9}{16}$ inches. Given by Mr. and Mrs. Ivan B. Hart (1959:242-2). Illustrated at actual size



5. Chinese (Han), 206 B.C.–A.D. 220. "Pi." Jade, diameter $5\frac{5}{8} \times \frac{3}{8}$ inches.
Given by Mr. and Mrs. Ivan B. Hart (1959:242-4)



6. Persian, Tabriz Style, probably eighteenth century. *Prince and Courtiers in a Mountain Kiosk*. Ink and watercolor, $10 \frac{9}{32} \times 6 \frac{7}{16}$ inches. Given by Mrs. Roger Williams Bennett (Margaret Rand Goldthwait '21) (1959:178)



7. Kitagawa Utamaro. Japanese, 1753–1806. *Girl Holding Bronze Statuette of an Ox*. Color woodcut with silver leaf, $14\frac{5}{8} \times 9\frac{5}{8}$ inches. Given by Arthur B. Schaffner (1959:257)



8. African, Sierra Leone (Mende), twentieth century. *Helmet Mask*. Wood, $17\frac{3}{8} \times 8 \times 8\frac{1}{2}$ inches. Given by Gwendolen M. Carter (1960:55)



9. Taddeo di Bartolo. Italian (Siena), about 1362–1422. *Martyrdom of St. Peter Martyr*, about 1404. Tempera and gold leaf on wood panel, $14\frac{1}{4} \times 15\frac{3}{8}$ inches. Purchased (1958:38)



10. Juan de Levi (?). Spanish (Aragon), early fifteenth century. *Predella: Habakuk, Isaiah, the Virgin, Resurrected Christ, Saint John the Evangelist, Jeremiah, Ezekiel.* Tempera and gold leaf on wood panel with original frame, $15\frac{1}{2} \times 90\frac{3}{4}$ inches. Given by Mrs. Henry B. Sawyer (George Washington Pope '96) (1952: 120). 11. Detail. *Jeremiah*



12. Italian (Padua), about 1500. After Andrea Mantegna. *Triumph of Caesar: Soldiers Carrying Trophies*, probably after 1492. Engraving, $10\frac{3}{4} \times 10\frac{1}{8}$ inches. Hind v, II, 15 b. Purchased from the gift of Amanda P. Nyce '59 (1959:172)



13. Tullio Lombardo. Italian (Venice), about 1455-1532. *Bust of a Young Woman*, 1505-10. Bronze, $5\frac{1}{2} \times 5\frac{3}{8} \times 4\frac{1}{2}$ inches. Purchased (1960:44)



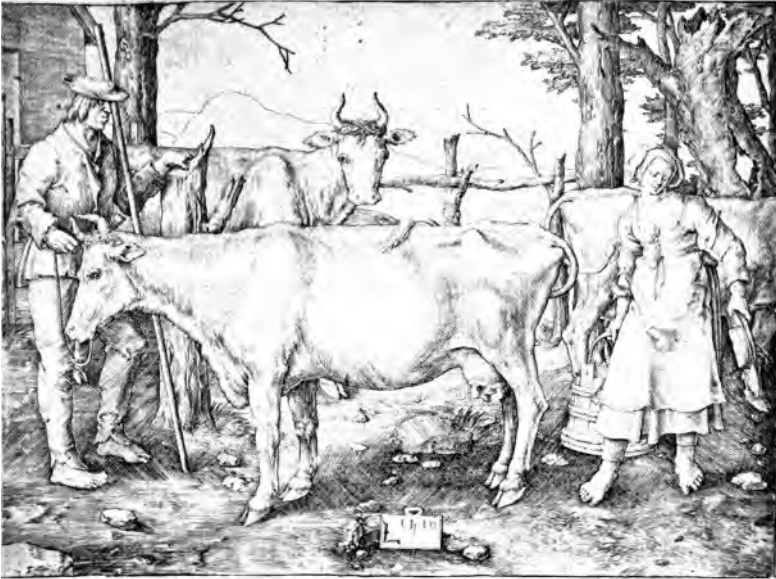
14. Albrecht Dürer. German (Nürnberg), 1471–1528. *Flight into Egypt* from the “Life of the Virgin,” about 1504. Woodcut, $11\frac{1}{8} \times 8\frac{1}{4}$ inches. Bartsch VII, 132, 89. Purchased from the Eleanor Lamont Cunningham '32 Fund (1959:7)



15. French, fifteenth century. *Saint Fiacre*. Oak, $13\frac{7}{8} \times 6\frac{1}{2} \times 4\frac{3}{4}$ inches. Purchased (1920:25-1)



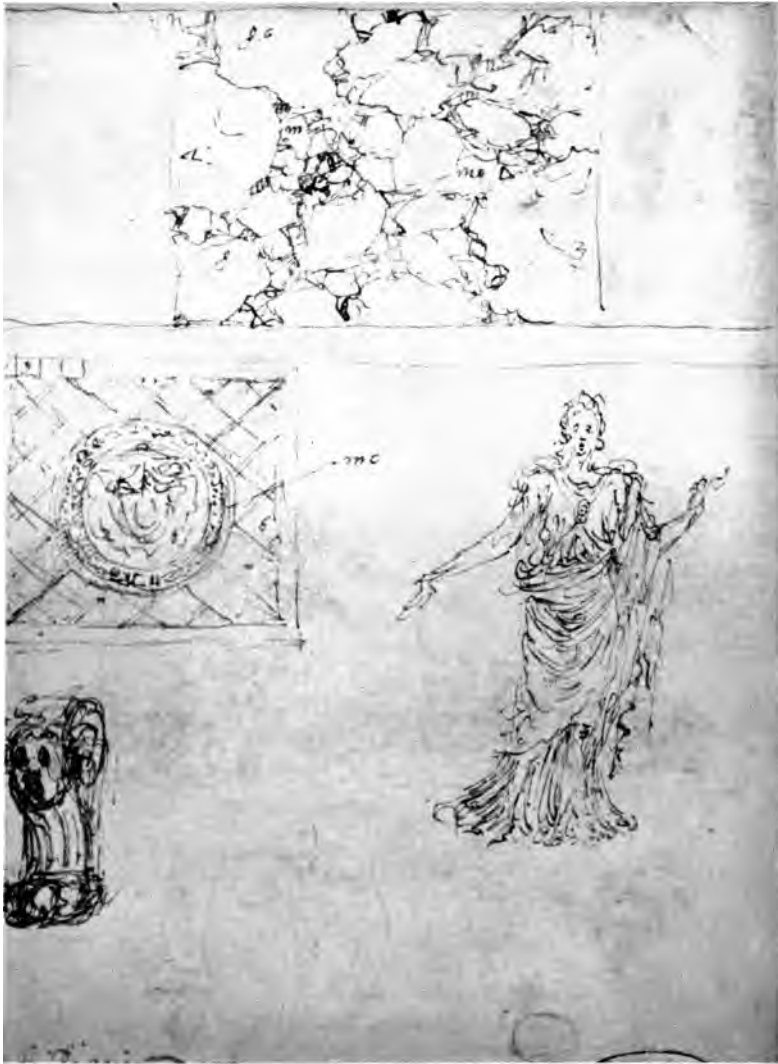
16. Francesco Primaticcio(?). Italian-French (Bologna-Fontainbleau), 1504-70. *Martyrdom of Saints Cosmas and Damian*. Red and black chalk on tan paper, squared for transfer, $9\frac{5}{8} \times 8\frac{1}{4}$ inches. Purchased from the gift of Mrs. Stanley Keith (Helen May Shedd '05) (1959:32)



17. Lucas van Leyden. Dutch (Leyden), 1494–1533. *The Milkmaid*, 1510. $4\frac{1}{2} \times 6\frac{1}{8}$ inches. Bartsch VII, 422, 158. Purchased (1959:5)



18. Perino del Vaga. Italian (Florence-Rome, 1500-47. *Studies of Cupid and Psyche*, about 1528-33. Black chalk, pen and brown ink on cream paper, 7¹/₂ x 5³/₈ inches. Purchased (1949:16-1). *Verso* illustrated on facing page



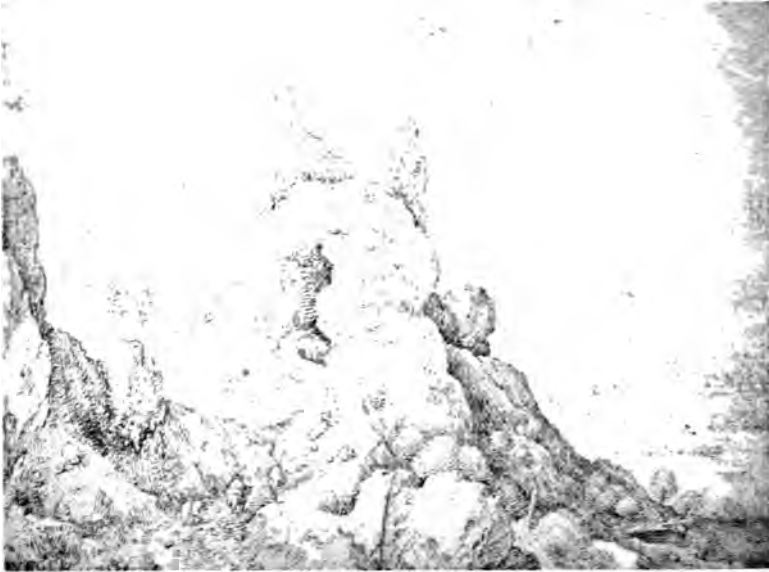
19. Perino del Vaga. Italian (Florence-Rome), 1500-47. *Studies of Architectural Details and of a Female Figure*, about 1528-33. Black chalk, pen and brown ink on cream paper, $7\frac{1}{2} \times 5\frac{3}{8}$ inches. Purchased (1949:16-1). Recto illustrated on facing page



20. Italian, first half of sixteenth century. *Interior, Chigi Chapel, Sta. Maria del Popolo, Rome.* Pen, brush and brown ink heightened with white on tan paper, 21 x 14 $\frac{3}{8}$ inches. Purchased (1951:200)



21. French, about 1540-50. *Portrait of a Man*. Oil on panel, $6\frac{1}{8} \times 5\frac{1}{2}$ inches.
Purchased (1944:8-1)



22. Pieter Bruegel the Elder. Flemish (Antwerp-Brussels), about 1525-69. *Mountain Landscape with Four Travelers*. Pen and brown ink on cream paper, $5\frac{1}{2} \times 7\frac{1}{6}$ inches. Signed and dated l.l.: P.BRUEGEL 1560. Purchased (1958:39)



23. Remigio Cantagallina. Italian (Florence), about 1582-1635. *View of Perugia*. Pen, brush and brown ink on cream paper, 11 x 31 $\frac{9}{16}$ inches. Purchased (1952:84)



24. Rembrandt (Harmensz.) van Rijn. Dutch (Leyden-Amsterdam), 1606-69. *Kneeling Woman*. Pen and brown ink on white paper, $3\frac{1}{4} \times 3\frac{3}{8}$ inches. About 1640-41(?). Given by Mr. and Mrs. Richard C. Harrison (Ruth Leonard '10) (1959:161)



25. Pieter Cornelisz. van Slingelandt. Dutch (Leyden), 1640(?)–91. *The Letter*. Oil on canvas, 20 × 19 inches. Given by Mr. and Mrs. Ernest Gottlieb (1958:92)



26. Jan Lievens the Elder. Dutch (Leyden-Antwerp-Amsterdam), 1607-74.
Landscape with a Road. Pen, brush and brown ink on cream paper, $9\frac{9}{16} \times 15\frac{3}{16}$
inches. Purchased (1960:91)



27. Italian (Bologna?), second half of seventeenth century. *Battle of the Lapiths and Centaurs*. Red chalk heightened with white on tan paper, 12 × 19³/₁₆ inches. Purchased (1949:17-1)



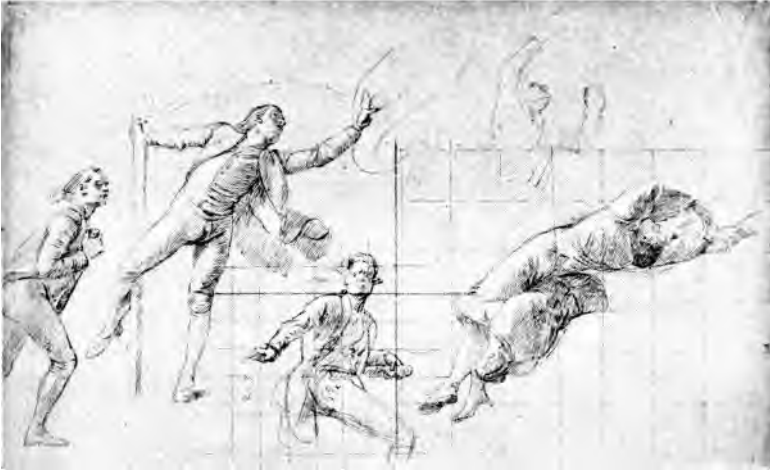
28. Dutch, first quarter of seventeenth century. *Louise de Coligny*(?). copper (miniature) with original frame, oval, $3 \frac{17}{32} \times 2 \frac{29}{32}$ inches: anonymously (1956:14). Illustrated at actual size



Charles Nicolas Cochin the Younger. French, 1715–90. *M. Copette*, about 1750. Black and red crayon and graphite on ivory paper, diameter 3 1/8 inches. *Metropolitan Museum of Art, New York* (1952:111). Illustrated at actual size



30. William Hogarth. English, 1697–1764. *James Caulfeild, Earl of Charlemont*, 1759 or after. Oil on canvas, 23½ × 19½ inches. Given by Mr. and Mrs. R. Keith Kane (Amanda Stewart Bryan '27) (1959:211)



31. John Singleton Copley. American, 1737–1815. *Study for the “Siege of Gibraltar,”* about 1783. Black chalk heightened with white on bluish-gray paper, squared for enlargement, $14 \times 23\frac{1}{8}$ inches. Purchased (1947:10)



32. Thomas Gainsborough. English, 1727–88. *Study for “The Market Cart,”* probably about 1786. Charcoal and wash, $10\frac{3}{8} \times 14\frac{3}{4}$ inches. Given by the children of Mrs. Thomas W. Lamont (Florence Haskill Corliss '93) (1953:28)



33. Jean-Honoré Fragonard. French, 1732–1806. After the engraving by Jacob Frey after Nicolas Poussin. *Sacrifice of Noah*, about 1750–59. Black chalk on white paper, 7 $\frac{3}{8}$ × 11 $\frac{1}{8}$ inches. Purchased (1957:8)



34. Nicolas de Launay. French, about 1739–92. After Jean-Honoré Fragonard. *The Love Cipher*. Engraving, 15 $\frac{1}{8}$ × 11 $\frac{1}{8}$ inches. Given by A. V. Galbraith in memory of Helen McIntosh Galbraith '01 (1959:116)



35. Giovanni Battista Tiepolo. Italian (Venice), 1696–1770. *Rinaldo and Armida*, about 1757–9. Black chalk, pen, brush and brown ink on cream paper, 16 $\frac{3}{8}$ × 11 $\frac{1}{8}$ inches. Given by Mr. and Mrs. Edwin H. Land in honor of Clarence Kennedy (1960:43)



36. English (Chelsea-Derby), 1770-84. *Candlestand*. Soft-paste porcelain painted in overglaze enamels and gold, $8\frac{3}{4} \times 7\frac{1}{4} \times 4\frac{5}{8}$ inches. Given by Mr. and Mrs. Malcolm Stearns, Jr. (Julia Carlyle Black '44) (1959:36)



37. French, about 1750. *Inkstand with a River God*. The figure perhaps Italian or Northern. Bronze, ormolu base, $5\frac{3}{4} \times 10\frac{1}{4} \times 6\frac{5}{8}$ inches. Purchased (1958:42)



38. Italian, first half of eighteenth century. *Male Nude*. Black and red chalk on buff paper, $15\frac{7}{8} \times 10\frac{3}{4}$ inches. Purchased (1956:2). *Recto* illustrated on facing



39. Italian, first half of eighteenth century. *Landscape with a Great Tree*. Black and red chalk on buff paper, $15\frac{3}{8} \times 10\frac{3}{4}$ inches. Purchased (1956:2). *Verso* illustrated on facing page



40. French (Early Louis XVI), third quarter of eighteenth century. *Snuffbox*, 1768(?). Gold and enamel with enameled miniature, $2 \times 2\frac{5}{8} \times 1\frac{1}{4}$ inches. Given by Mr. and Mrs. Ernest Gottlieb (1958:96)



41. Jacques-Louis David. French, 1748–1825. *Study of Mother and Child at the Feet of Tatius* for the “Rape of the Sabines,” about 1794–6. Purchased (1956:46)



42. William Blake, English (1757-1827). *Two Studies of the Head of Satan*. Pencil on cream paper, 8³/₈ × 12¹/₄ inches. Given by Philip Hofer (1960:12)



43. Thomas Rowlandson. English, 1756–1827. *Knaresborough, Yorkshire*, 1802. Pencil and watercolor on cream paper, $9\frac{3}{4} \times 15\frac{1}{4}$ inches. Signed and dated l.r.: ROWLANDSON 1802. Given by the children of Mrs. Thomas W. Lamont (Florence Haskill Corliss '93) (1953:26)



John De Courtenay, Esq. 1760-1820. Viscount of Devon. Pen-
cil and watercolor on cream paper. 1775. 2 inches. Signed and dated LL:
1775. The Yale Collection of Art and Architecture. Purchase 1962. 43



45. John Hoppner. English, 1758–1810. *Mrs. Keith Jopp*. Oil on canvas, 29½ × 25 inches. Given by Mr. and Mrs. Robert Halsband (Ruth-Alice Norman '22) (1959:204)



46. John Varley. English, 1778–1842. *River Scene with Bridge and Castle in Distance*. Watercolor and oil on cream paper, oval, $11\frac{1}{8} \times 17\frac{3}{4}$ inches. Signed l.c.: J. VARLEY. Given by the children of Mrs. Thomas W. Lamont (Florence Haskill Corliss '93) (1953:39)



47. Samuel Prout. English, 1783–1852. *Foscari Palaces, Venice*. Pencil heightened with white on gray paper, 10 $\frac{3}{8}$ × 14 $\frac{5}{8}$ inches. Purchased (1952:79)



8. Thomas Girtin. English, 1775-1802. *View of the Village of Chaillot* for "A Selection of Twenty of the Most Picturesque Views of Paris and its Environs,"



49. William Turner of Oxford. English, 1789–1862. *Near Chinnor, Oxfordshire*. Pencil and watercolor on cream paper, 8 $\frac{3}{8}$ × 14 $\frac{1}{4}$ inches. Signed l.r.: W. TURNER. Purchased (1952:82)



50. David Wilkie. Scottish, 1785–1841. *Study of Beadle and Highland Figures for "A Parish Beadle,"* 1822. Pencil and watercolor on tan paper, $5\frac{5}{8} \times 7\frac{1}{2}$ inches. Signed and dated l.l.: D WILKIE 1822. Given by Malcolm Stearns, Jr., in memory of Annis Kendall Stearns '10 (1956:8)



51. John Martin. English, 1789–1854. *View of Shepherds Bush and the Grounds of Norlands*. Watercolor on cream paper, $6\frac{1}{2} \times 9\frac{3}{8}$ inches. Signed and dated l.r.: J. MARTIN. 1836. Given by Malcolm Stearns, Jr., in memory of Annis Kendall Stearns '10 (1956:9)



52. George Sydney Shepherd (?). English, active 1821–58. *Victoria Tower, Westminster*. Pencil and watercolor on ivory paper, $15\frac{3}{8} \times 9\frac{1}{8}$ inches. Purchased (1952:37)



53. John Sell Cotman. English, 1782-1842. *Study of the West Front of Notre Dame, Rouen* for the "Architectural Antiquities of Normandy," 1821-22. Pencil, brush and brown wash on buff paper, 20 $\frac{7}{8}$ \times 15 $\frac{3}{8}$ inches. Signed and dated l.l.: J. S. COTMAN 1817; and l.r.: J. S. COTMAN. Given by the children of Mrs. Thomas W. Lamont (Florence Haskill Corliss '93) (1953:29)



54. Copley Fielding. English, 1787–1855. *Beach and Fishing Boats*. Oil on canvas, 17 $\frac{7}{8}$ × 24 $\frac{1}{8}$ inches. Signed and dated l.r.: COPLEY FIELDING / 1836(?). Given by Dr. and Mrs. G. H. A. Clowes (1955:83)



55. Thomas Doughty. American, 1793–1856. *A Romantic Landscape*. Oil on canvas, $30\frac{1}{4} \times 40\frac{1}{2}$ inches. Signed and dated l.c.: T DOUGHTY / 1832. Given by Mrs. John S. Dalrymple (Bernice Barber '10) (1959:72)



56. Théodore Géricault. French, 1791–1824. *Landscape with Stormy Sky*, about 1813–14. Pencil, pen, brush, brown ink and watercolor heightened with white on white parchment, $6\frac{1}{4} \times 8\frac{1}{4}$ inches (sight). Purchased (1960:92). *Verso* illustrated on facing page



57. Théodore Géricault. French, 1791–1824. *Courtyard in Montmartre(?)*, about 1813–14. Pencil and brown ink on white parchment, $7\frac{7}{8} \times 10\frac{1}{2}$ inches (sight). Purchased (1960:92). *Recto* illustrated on facing page



58. Margareta Angelica Peale. American, 1795–1882. *Still Life of Watermelon and Peaches*. Oil on canvas, 12 $\frac{3}{8}$ × 18 $\frac{1}{2}$ inches. Signed l.r.: MAP. Dated on back: Dec 1828. Purchased (1952:53)



59. Thomas Cole. American, 1801-48. *Study for the "Voyage of Life,"* about 1840. Oil on panel, 12 $\frac{1}{8}$ × 17 inches. Purchased (1950:13)



60. Thomas H. Hinckley. American, 1813–96. *The Watering Place*. Oil on canvas, 26½ × 36½ inches. Signed and dated l.c.: T. H. HINCKLEY / 1852. Given by Mrs. John S. Dalrymple (Bernice Barber '10) (1959:73)



61. Martin J. Heade. American, 1819–1904. *New Jersey Meadows*, about 1863. Oil on canvas, 15 $\frac{1}{8}$ × 30 $\frac{1}{8}$ inches. Signed l.l.: M.J HEADE, the J and H conjoined. Purchased (1951:298)



62. Honoré Daumier. French, 1808–79. *Docteur (Clement François Victor Gabriel) Prunelle*, 1830–33. Bronze, $5 \times 5\frac{1}{2} \times 4\frac{5}{8}$ inches. Early cast. Given by Mr. and Mrs. Richard C. Harrison (Ruth Leonard '10) (1958:133)



63. Rodolphe Bresdin. French, 1825–85. *Study for the "Flemish Interior,"* 1860–61. Pen and India ink on tissue, $6 \times 4\frac{1}{4}$ inches. Purchased from the Eleanor Lamont Cunningham '32 Fund (1959:3)



64. Albert Bierstadt. American, 1830–1902. *A Wilderness Lake*. Oil on canvas, 25 × 39½ inches. Signed and dated l.l.: A BIERSTADT. / 1861., the A and B conjoined. Given by Mrs. John S. Dalrymple (Bernice Barber '10) (1960:37)



65. Samuel Palmer. English, 1805–81. *The Gleaners*, 1873(?). Oil on canvas, 18 $\frac{3}{4}$ x 12 inches. Purchased (1951:281)



66. Charles Caleb Ward. Canadian, about 1831–96. *Seal Hunters*. Watercolor, 13 × 19 inches. Signed and dated l.l.: CHARLES C. WARD / 1881. Purchased (1951: 22)



67. Samuel S. Carr. American, active 1878–98. *Beach Scene*, about 1879. Oil on canvas, 14 $\frac{3}{8}$ × 22 $\frac{5}{8}$ inches. Signed l.r.: s. s. CARR. Bequeathed by Annie S. Co-burn (1934:3–10)



68. George Inness. American, 1825-94. *Cloudy Day*. Oil on canvas, 14 × 20 inches. Signed and dated l.r.: GEO INNESS 1868. Given by Mrs. John Stewart Dalrymple (Bernice Barber '10) (1960:41)



69. Adolphe Monticelli. French, 1824–86. *A Sylvan Ceremony*. Oil on wood panel, 18 × 24 $\frac{3}{4}$ inches. Signed l.r.: MONTICELLI. Given by Mrs. John Stewart Dalrymple (Bernice Barber '10) (1960:42)



70. Odilon Redon. French, 1840–1916. *Oyster*, about 1900. Watercolor, 9 × 5 inches on white paper. Signed l.r.: ODILON REDON. Purchased (1954:36)



71. Maurice B. Prendergast. American, 1859–1924. *South Boston Pier*. Pencil and watercolor on white paper, 18 $\frac{3}{4}$ × 14 inches. Signed and dated l.l.: MAURICE B. PRENDERGAST; with brush l.l.: PRENDERGAST / 1896. Purchased from the Charles B. Hoyt Fund (1950:43)



72. Aristide Maillol. French, 1861-1944. *Young Bather Standing*, 1914. Bronze, $12\frac{5}{8} \times 4\frac{3}{8} \times 2\frac{3}{8}$ inches. Rudier cast. Purchased from the gift of Mrs. Charles Inslee (Marguerite Tuthill '15) (1958:130)



73. Käthe Kollwitz. German, 1867–1945. *Study for "Fight in the Castle Armory,"* 1906. Black, burnt sienna and light ochre chalks on reddish brown paper, 23½ × 19¼ inches. Signed l.r.: KÄTHE KOLLWITZ. Purchased (1958:50)



74. Franklin C. Watkins. American, 1894-. *Benjamin Fletcher Wright, President of Smith College*, 1958. Oil on canvas, 42 × 34 inches. Signed u.r.: WATKINS. Given to the College by the Trustees (1959:37)



75. John Marin. American, 1872–1953. *Cliffs and Sea*. Charcoal and watercolor on white paper, 26 $\frac{3}{8}$ × 21 $\frac{1}{8}$ inches. Signed and dated l.r.: MARIN 16. Given by Mr. and Mrs. David M. Solinger (1959:75)



76. Georges Rouault. French, 1871-1958. *Autumn*. Lithograph, $20\frac{3}{8} \times 27\frac{1}{2}$ inches. First state. Signed and dated l.r.: 1927 G ROUAULT—; numbered l.r.: No. 6 of 30 proofs. Purchased from the Eleanor Lamont Cunningham '32 Fund (1959:34)



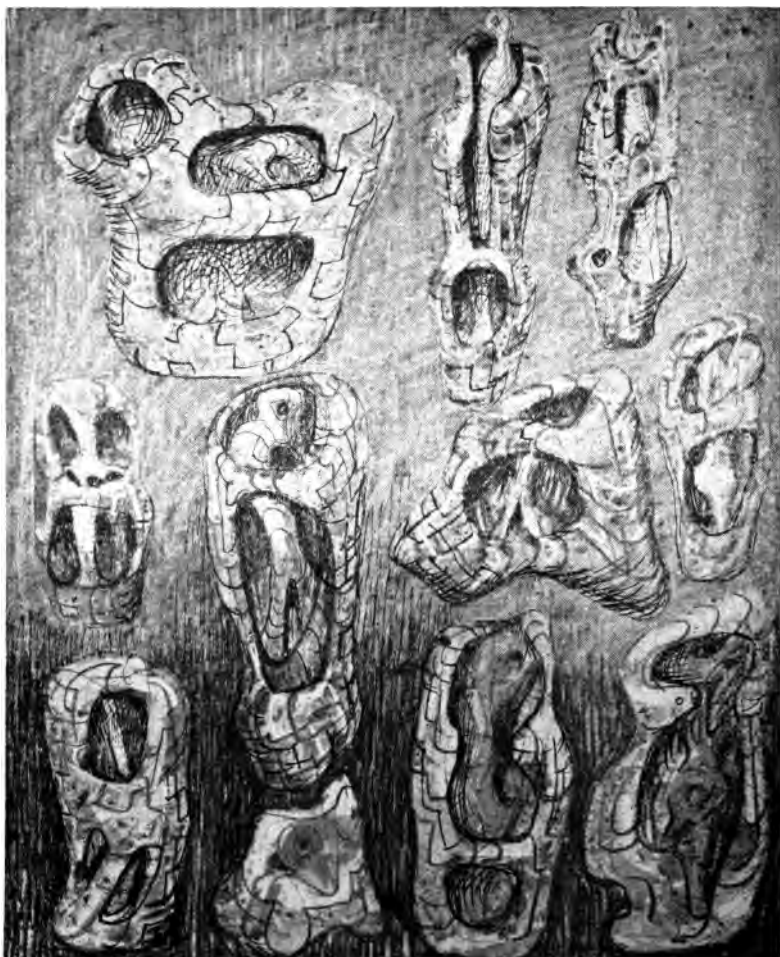
77. Pablo Picasso. Spanish-French, 1881-. *The Frugal Meal*, 1904. Etching, 18 $\frac{3}{8}$ × 14 $\frac{3}{8}$ inches. Geiser 2, II b. Vollard Edition. Purchased from the gift of the Chace Foundation, Inc. (1957:49)



78. Edouard Vuillard. French, 1868–1940. *Interieur aux Tentures Roses III* from “Paysages et Interieurs,” 1899. Color lithograph, 14 $\frac{5}{8}$ × 11 $\frac{3}{4}$ inches (sheet). Signed l.r.: E VUILLARD. Roger-Marx 38, II. Purchased (1960:33)



79. Kurt Schwitters. German, 1887–1948. *Kynast-Fest*. Collage, $11\frac{1}{8} \times 8\frac{3}{8}$ inches. Signed and dated on mat: KURT SCHWITTERS 1919. Purchased from the Eleanor Lamont Cunningham '32 Fund (1959:65)



80. Henry Moore. English, 1898-. *Studies of Internal and External Forms*. Pen, crayon, India ink and watercolor, 11½ × 9½ inches. Signed and dated l.r.: MOORE / 48. Purchased (1952:64)



81. John Piper. English, 1903-. *Portland Stone*, about 1954. Pen, brush, India ink and watercolor on white paper, $14\frac{1}{4} \times 21\frac{1}{2}$ inches. Signed l.l.: JOHN PIPER. Bequeathed by Mary McMillan '16 (1956:51)



82. Ewald Mataré. German, 1887-. *Grazing Cow*, about 1930. Bronze, $6\frac{1}{2} \times 10 \times 3\frac{1}{2}$ inches. Monogram engraved on underside of cow. Purchased (1960:15)



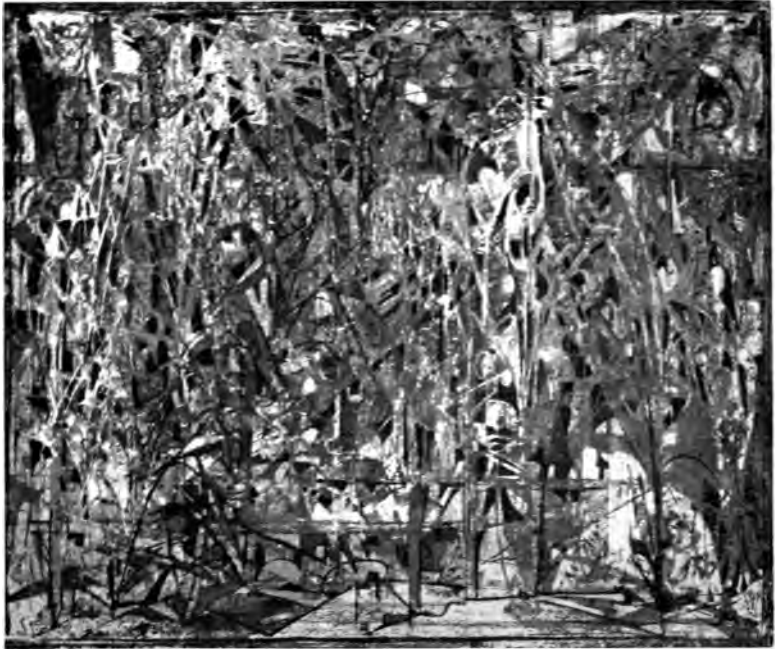
83. Eugene Berman. Russian-American, 1899-. *Barques Nocturne*. Oil on canvas, $39\frac{1}{4} \times 28\frac{1}{4}$ inches. Signed and dated l.r.: E. BERMAN 1929. Given by Mr. and Mrs. James Thrall Soby (Melissa Wadley '32) (1954:25)



84. Adolph Gottlieb. American, 1903-. *Descent into Darkness*, 1903. Oil on masonite, 30 × 25 inches. Signed u.l.: ADOLPH GOTTLIEB. Acquired by exchange (.....)



85. Robert Motherwell. American, 1915-. *Collage*. Oil and collage on academy board, 26 $\frac{1}{4}$ \times 18 $\frac{3}{4}$ inches. Signed and dated l.r.: RM 47. Acquired by exchange (1999-0-)



86. Mirko (Basaldella). Italian, 1910-. *Tumult*, about 1951. Linoleum cut and gouache, 12¼ × 14½ inches. Signed l.l.: MIRKO. Purchased from the gift of Mrs. John Wintersteen (Bernice M. McIlhenny '25) (1952:56)



87. Iaroslav Serpan. Yugoslav-French, 1922-. *Waansuu*. Encaustic on canvas, 51 $\frac{3}{8}$ \times 76 $\frac{3}{4}$ inches. Signed l.l.: SERPAN. Dated on back: —04.XII. 1956. Given by Mr. and Mrs. David M. Solinger (1957:60)



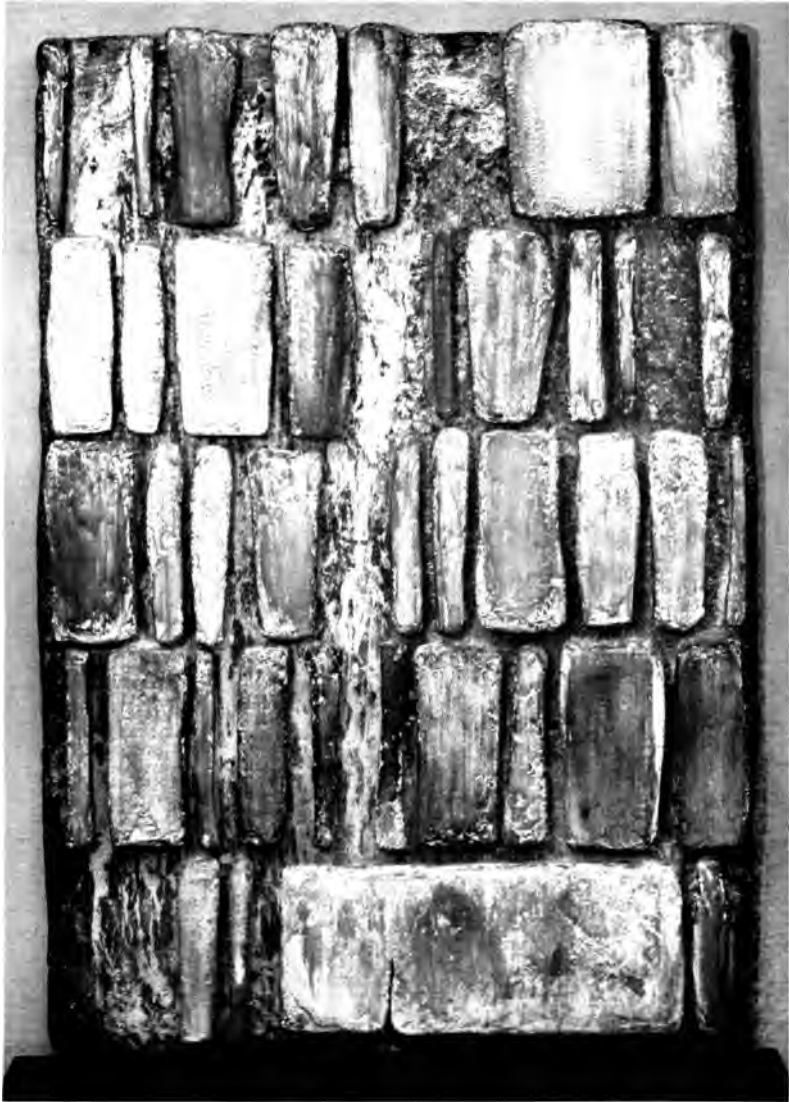
88. Leonard Baskin. American, 1922-. *Marat*. Pen, brush and India ink on white paper, 22¼ × 31 inches. Signed and dated l.r.: BASKIN / 1958. Acquired from the artist by exchange (1958:16)



89. Leonard Baskin. American, 1922-. *Seated Man with Owl*, 1959. Cherry, 30 × 16 $\frac{5}{8}$ × 17 $\frac{3}{4}$ inches. Purchased (1959:179)



90. Lee Bontecou. American, 1931-. *Untitled Construction*, 1959. Canvas and wire, 20 $\frac{3}{8}$ \times 20 $\frac{3}{8}$ \times 7 $\frac{3}{4}$ inches. Purchased with the gift of the Chace Foundation, Inc. (1960:14)



91. Robert Mallery. American, 1917--. *Prison Yard*, 1959. Composition stone in resin base, $8\frac{1}{2} \times 5\frac{7}{8} \times 4$ inches. Purchased from the Eleanor Lamont Cunningham '32 Fund (1959:240)

Exhibitions

- September 18–October 10 *Recent Gifts and Purchases*
October 14–November 18 *Paintings from Smith Alumnae Collections*
November 21–June 30 *Ancient Chinese Jades and Japanese Prints*
November 30–January 18 *Marc Chagall's Bible*
February 12–February 22 *Paolo Veronese's Rest on the Flight*
February 12–March 23 *Prints by Picasso in Northampton Collections*
April 6–May 15 *African Primitive Art*
April 6–May 9 *New Sculpture Now* (organized jointly with
the Friends of Art, Mount Holyoke College)
May 14–May 26 *Works of Art Owned by Students*
May 20–June 30 *Paintings by Alfred Vance Churchill*
May 20–June 30 *Recent Gifts, Purchases and Loans*

Publications

A complete list of the most important and currently available publications of the Museum may be had upon application to the Museum Secretary.

Paintings from Smith Alumnae Collections. By Robert O. Parks, with a foreword by Herbert Davis. Pp. 108, 45 figs. \$1.00

Prints by Picasso in Northampton Collections. By Gloria Seaman '60. Pp. 20, mimeographed. Out of print

New Sculpture Now. By Robert O. Parks and Gloria Seaman '60, with an essay by Daniel Aaron. Pp. 36, 6 figs. Published jointly with the Friends of Art, Mount Holyoke College. 25 cents

Piranesi. Commemorative exhibition catalogue by Robert O. Parks, with essays by Philip Hofer, Karl Lehmann and Rudolf Wittkower. Pp. 160, 57 figs. \$3.50

Accessions

PAINTINGS

- Albert Bierstadt. American, 1830-1902. *A Wilderness Lake*, oil. Given by Mrs. John S. Dalrymple (Bernice Barber '10)
- John Constable. English, 1776-1837. *The Thompson Brothers Fishing*, oil. Given by Adeline F. Wing '98 and Caroline R. Wing '96
- William H. Darr. American, 1920-. *Landscape*, watercolor. Given by Henry-Russell Hitchcock
- East Indian, eighteenth-nineteenth century. *Portrait of a Young Girl*, ink and gouache (miniature). Given by Janos Scholz
- Louis M. Eilshemius. American, 1864-1941. *Ruined Castle on a Hill*, oil. Given by Mr. and Mrs. Seymour R. Meyer (Carol Isabel Rubin '36)
- Flemish, second quarter sixteenth century. *Madonna and Child*, oil. Given by Corinne A. Thompson '18
- William Hogarth. English, 1697-1764. *James Caulfeild, Earl of Charlemont*, oil. Given by Mr. and Mrs. R. Keith Kane (Amanda Stewart Bryan '27)
- John Hoppner. English, 1758-1810. *Keith Jopp, Esq., of Aberdeen*, oil. Given by Mr. and Mrs. Robert Halsband (Ruth-Alice Norman '22)
- John Hoppner. English, 1758-1810. *Mrs. Keith Jopp*, oil. Given by Mr. and Mrs. Robert Halsband (Ruth-Alice Norman '22)
- Philippe Hosiasson. Russian-French, 1898-. *The Green Knot*, oil. Given by Mrs. Maurice Stone
- Lawrence R. McCoy. American, 1888-. *Montilla*, oil. Given by Mrs. J. Herbert Johnson (Rachel Dearborn Harris '09)
- Dorothy Ochtman '14 (Mrs. William L. Del Mar). American, 1892-. *Peace*, oil. Given by the artist
- Persian, seventeenth century. *A Prince Displays his Skill before Khaquan*, ink, liquid gold and gouache (miniature). Given by Mrs. Roger Williams Bennett (Margaret Rand Goldthwait '21)
- Persian (Tabriz), eighteenth century or later. *Prince and Courtiers in a Mountain Kiosk*, ink and gouache (miniature). Given by Mrs. Roger Williams Bennett (Margaret Rand Goldthwait '21)
- Philips Wouwermans. Dutch, 1619-68. *Blacksmith's Family*, oil. Purchased

DRAWINGS

- William Blake. English, 1757-1827. *Two Studies of the Head of Satan*, pencil. Given

- Théodore Géricault. French, 1791–1824. *Landscape with Stormy Sky (recto), Courtyard in Montmartre (?) (verso)*, pencil, pen, brown ink and watercolor heightened with white. Purchased
- Italian, second half sixteenth century. After Polidoro da Caravaggio. *Study after Antique Sculpture (?)*. Given by Mr. and Mrs. Arthur Wiesenberger
- Italian (Tuscany or Rome), middle seventeenth century. *Personifications of the Four Continents before the Virgin*, pen, brush and brown ink heightened with white. Given by Mr. and Mrs. Arthur Wiesenberger
- Italian, second half seventeenth century. *Head of a Man*, red chalk. Given by Mr. and Mrs. Arthur Wiesenberger
- Italian, late seventeenth or early eighteenth century. *Two Studies of the Adoration of the Shepherds*, pen, brush and brown ink. Given by Mr. and Mrs. Arthur Wiesenberger
- Jan Lievens. Dutch, 1607–74. *Landscape with a Road*, pen and brown ink. Purchased
- Giovanni Battista Piranesi (?). Italian, 1720–78. *Studies of Male Figures*, pen, brush, brown and gray ink. Given by Eugene Victor Thaw
- Rembrandt (Harmensz.) van Rijn. Dutch, 1606–69. *Kneeling Woman*, pen and brown ink. Given by Mr. and Mrs. Richard C. Harrison (Ruth Leonard '10)
- Giovanni Mauro Rovere. Italian, 1570–1640. *Martyrdom of the Eleven Thousand Virgins*, brush and brown ink. Given by Mr. and Mrs. Arthur Wiesenberger
- Giovanni Battista Tiepolo. Italian, 1696–1770. *Rinaldo and Armida*, black chalk, pen, brush and brown ink. Given by Mr. and Mrs. Edwin H. Land in honor of Clarence Kennedy

PRINTS

- Gillian Ayres. English, contemporary. *Untitled*, serigraph. Given by John Coplans
- Sandra Blow. English, 1925–. *Untitled*, serigraph. Given by John Coplans
- Denis Bowen. English, contemporary. *Composition (Vertical)*, serigraph. Given by John Coplans
- Denis Bowen. English, contemporary. *Untitled*, serigraph. Given by John Coplans
- Ludwig Büsinck. German, about 1590–1630. After Georges Lallemand. *Aeneas Carrying his Father Anchises from the Burning City of Troy*, chiaroscuro woodcut. Acquired by exchange
- Agostino Carracci. Italian, 1557–1602. *Mercury and the Graces*, engraving. Purchased
- Agostino Carracci. Italian, 1557–1602. After Paolo Veronese. *The Virgin Protecting Two Members of a Religious Order*, engraving. Purchased

- Canaletto (Antonio Canale). Italian, 1697-1768. *Imaginary View of Padua*, etching. Purchased
- John Coplans. English, 1920-. *Composition*, serigraph. Given by Mr. and Mrs. Walter Kamys
- John Coplans. English, 1920-. *Composition II*, serigraph. Given by the artist
- John Coplans. English, 1920-. *Scrigraphs*, serigraph (poster). Given by the artist
- John Coplans. English, 1920-. *Untitled (1957)*, serigraph. Given by the artist
- John Coplans. English, 1920-. *Untitled (1958)*, serigraph. Given by the artist
- John Coplans. English, 1920-. *Standing Female Figure*, serigraph. Given by the artist
- John Christoforou. English, 1921-. *Untitled*, serigraph. Given by John Coplans
- John Christoforou. English, 1921-. *Standing Figure*, serigraph. Given by John Coplans
- Alan Davie. English, 1920-. *Yes*, serigraph. Given by John Coplans
- Alan Davie. English, 1920-. *Yes*, serigraph. Given by John Coplans
- Alan Davie. English, 1920-. *Yes*, serigraph. Given by John Coplans
- Alan Davie. English, 1920-. *Variation on "Yes,"* serigraph. Given by John Coplans
- Robert D'Arista. American, 1929-. *Figure, 1960*, monotype. Given by Mrs. Edward T. Chase (Ethelyn Atha '44)
- William A. Delamotte. English, 1775-1863. *Shepherd Sleeping under a Large Tree*, lithograph. Acquired by exchange
- Albrecht Dürer. German, 1471-1528. *The Resurrection* from "The Small Passion," woodcut. Purchased
- Chokosai Eisho. Japanese, late eighteenth century. *Fishing Party*, color woodcut. Given by Arthur B. Schaffner
- Chobunsai Eishi. Japanese, 1756-1815. *Mayuzumi of Darmoriji-ya*, color woodcut. Given by Arthur B. Schaffner
- Herbert L. Fink. American, 1921-. *Jacob and the Angel*, engraving. Given by the Ford Foundation
- Herbert L. Fink. American, 1921-. *Abraham and Isaac*, etching. Given by the Ford Foundation
- Herbert L. Fink. American, 1921-. *Athens, Vermont*, etching and engraving. Given by the Ford Foundation
- Hendrick Goltzius. Dutch, 1558-1617. *The Holy Family and Infant Saint John*, engraving. Purchased
- Hendrick van Goudt. Dutch, 1585-1630. After Adam Elsheimer. *The Flight into Egypt*, engraving. Purchased
- Suzuki Haronobu. Japanese, 1725-70. *Mother and Child in Summer*, color woodcut. Given by Arthur B. Schaffner
- Dennis Hawkins. English, contemporary. *Untitled*, serigraph. Given by John Cop-

- Dennis Hawkins. English, contemporary. *Fruit on a Table*, serigraph. Given by John Coplans
- Ichiryusai Hiroshige. Japanese, 1779–1858. *Passage of a Daimyo's Train*, color woodcut. Given by Arthur B. Schaffner
- Ichiryusai Hiroshige. Japanese, 1779–1858. *Mandarin Duck in the Snow*, color woodcut. Given by Arthur B. Schaffner
- Ichiryusai Hiroshige. Japanese, 1779–1858. *Sumida River* from "One Hundred Views of Edo," color woodcut. Given by Arthur B. Schaffner
- Ichiryusai Hiroshige. Japanese, 1779–1858. *Tatsuta Mountain and the Tatsuta River* from "Famous Sights in the Sixty-odd Provinces," color woodcut. Given by Arthur B. Schaffner
- Ichiryusai Hiroshige. Japanese, 1779–1858. *Snow at Makinoyama* from "Famous Sights in the Sixty-odd Provinces," color woodcut. Given by Arthur B. Schaffner
- Ichiryusai Hiroshige. Japanese, 1779–1858. *Sudden Shower* from "Sixty-nine Stations on the Tokaido," color woodcut. Given by Arthur B. Schaffner
- Katsushika Hokusai. Japanese, 1760–1849. *Moonlight on the Yedo River* from "Snow, Moon and Flower," color woodcut. Given by Arthur B. Schaffner
- Katsushika Hokusai. Japanese, 1760–1849. *Ushibori* from "Thirty-six Views of Fuji," color woodcut. Given by Arthur B. Schaffner
- Katsushika Hokusai. Japanese, 1760–1849. *Temma Bridge, Osaka, Province of Settsen* from "Thirty-six Views of Fuji," color woodcut. Given by Arthur B. Schaffner
- Katsushika Hokusai. Japanese, 1760–1849. *View of Fuji from Ejiri, Province of Sunshu* from "Thirty-six Views of Fuji," color woodcut. Given by Mrs. Arthur B. Schaffner in memory of Louise Stevens Bryant '08
- Katsushika Hokusai. Japanese, 1760–1849. *Back View of Fuji from the Minob River* from "Thirty-six Views of Fuji," color woodcut. Given by Mrs. Arthur B. Schaffner in memory of Louise Stevens Bryant '08
- Katsushika Hokusai. Japanese, 1760–1849. *Boat Laden with Mats and Melons* from "Thirty-six Views of Fuji," color woodcut. Given by Mrs. Arthur B. Schaffner in memory of Louise Stevens Bryant '08
- Katsushika Hokusai. Japanese, 1760–1849. *Water Wheel at Onden* from "Thirty-six Views of Fuji," color woodcut. Given by Mrs. Arthur B. Schaffner in memory of Louise Stevens Bryant '08
- Katsushika Hokusai. Japanese, 1760–1849. *Roof of Hongwanji Temple, Akakusa* from "Thirty-six Views of Fuji," color woodcut. Given by Mrs. Arthur B. Schaffner in memory of Louise Stevens Bryant '08
- Katsushika Hokusai. Japanese, 1760–1849. *Falls of the Washing of Yoshitsune's Horse in Yoshino* from "Traveling Around Waterfall Country," color woodcut. Given

- “Mangwa,” color woodcut. Given by Mrs. Arthur B. Schaffner in memory of Louise Stevens Bryant '08
- Katsushika Hokusai, Japanese, 1760–1849. *Faces* from “Mangwa,” color woodcut. Given by Mrs. Arthur B. Schaffner in memory of Louise Stevens Bryant '08
- Gwyther Irwin. English, contemporary. *Gun No. VI*, serigraph. Given by John Coplans
- Italian (Padua), about 1500. After Andrea Mantegna. *Triumph of Caesar: Soldiers Carrying Trophies*, engraving. Purchased from the gift of Amanda P. Nyce '59
- Livia Kádár. Hungarian, 1894–. *Legend*, etching. Given by Mrs. Juan Nazarian (Ruth Hammond William '20)
- Livia Kádár. Hungarian, 1894–. *Nativity*, etching. Given by Mrs. Juan Nazarian (Ruth Hammond William '20)
- Torii Kiyonaga. Japanese, 1752–1815. *Geishas Dressing*, color woodcut. Given by Arthur B. Schaffner
- Isoda Koryusai. Japanese, active 1765–85. *Lovers in Front of a Bath House*, color woodcut. Given by Arthur B. Schaffner
- Lucas van Leyden. Dutch, 1494–1533. *Crucifixion*, engraving. Purchased
- Henry Lundy. English, contemporary. *Composition*, serigraph. Given by John Coplans
- Henri Matisse. French, 1869–1954. *Peaches*, lithograph. Purchased
- Hasegawa Mitsunobu. Japanese, middle eighteenth century. *Lovers*, color woodcut. Given by Arthur B. Schaffner
- Hishigawa Moronobu (?). Japanese, 1618–95. Or Hishikawa School. *Cool of Summer*, Colored woodcut. Purchased
- Ivan Mosca. Italian, 1915–. *Zanzarone*, color lithograph. Purchased from the gift of Mrs. Sigmund W. Kunstadter (Maxine Helene Weill '24)
- Walter Nessler. English, contemporary. *Composition Blue*, serigraph. Given by John Coplans
- Walter Nessler. English, contemporary. *Still Life*, serigraph. Given by John Coplans
- Walter Nessler. English, contemporary. *Untitled*, serigraph. Given by John Coplans
- Adriaen van Ostade. Dutch, 1610–84. *Dance in a Tavern*, etching. Purchased
- Pablo Picasso. Spanish, 1881–. *Blind Minotaur*, etching. Purchased
- Pablo Picasso. Spanish, 1881–. *Dove in Flight*, lithograph (poster). Purchased
- Giovanni Battista Piranesi. Italian, 1720–78. *Frontispiece* from “Trophies of Ottavianus Augustus,” with vignette, etching. Purchased
- Giovanni Battista Piranesi. Italian, 1720–78. *The Fontana dell'Acqua Giulia* from “Trophies of Ottavianus Augustus,” etching. Purchased
- Giovanni Battista Piranesi. Italian, 1720–78. *Trophy of Ottavianus Marcia* from “Trophies of Ottavianus Augustus,” etching. Purchased
- Giovanni Battista Piranesi. Italian, 1720–78. *Trophy of Ottavianus Marcia* from “Trophies of Ottavianus Augustus,” etching. Purchased

- Giovanni Battista Piranesi. Italian, 1720–78. *Fragments of Frieze, Architrave, Columns* from “Trophies of Ottavianus Augustus,” etching. Purchased
- Giovanni Battista Piranesi. Italian, 1720–78. *Fragments of Frieze, Capitals, Various Ornaments* from “Trophies of Ottavianus Augustus,” etching. Purchased
- Giovanni Battista Piranesi. Italian, 1720–78. *Cornices and Soffits* from “Trophies of Ottavianus Augustus,” etching. Purchased
- Giovanni Battista Piranesi. Italian, 1720–78. *Capitals and Columns* from “Trophies of Ottavianus Augustus,” etching. Purchased
- Giovanni Battista Piranesi. Italian, 1720–78. *Frieze, Soffits and Columns* from “Trophies of Ottavianus Augustus,” etching. Purchased
- Giovanni Battista Piranesi. Italian, 1720–78. *Capitals and Fragments of Columns* from “Trophies of Ottavianus Augustus,” etching. Purchased
- Giovanni Battista Piranesi. Italian, 1720–78. *View of the Villa Estnse* from “Views of Rome,” etching. Given by Mrs. David Keppel
- Giovanni Battista Piranesi. Italian, 1720–78. *View of the Trevi fountain* from “Views of Rome,” etching. Purchased
- Giovanni Battista Piranesi. Italian, 1720–78. *View of the Porto di Ripetta* from “Views of Rome,” etching. Given by Mrs. David Keppel
- Giovanni Battista Piranesi. Italian, 1720–78. *View of the Campo Vaccino* from “Views of Rome,” etching. Given by Mrs. David Keppel
- Giovanni Battista Piranesi. Italian, 1720–78. *View of the Pyramid of Caius Cestius* from “Views of Rome,” etching. Given by Mrs. David Keppel
- Giovanni Battista Piranesi. Italian, 1720–78. *The Canopus, Hadrian’s Villa* from “Views of Rome,” etching. Given by Mrs. David Keppel
- Giovanni Battista Piranesi. Italian, 1720–78. *The Heliocaminus, Hadrian’s Villa* from “Views of Rome,” etching. Given by Mrs. David Keppel
- Giovanni Battista Piranesi. Italian, 1720–78. *Frontispiece with Statue of Minerva* from “Views of Rome,” etching. Given by Mrs. David Keppel
- Giovanni Battista Piranesi. Italian, 1720–78. *Frontispiece* from “Views of Rome.” etching. Given by Mrs. David Keppel
- Giovanni Battista Piranesi. Italian, 1720–78. *View of the Arch of Constantine* from “Views of Rome,” etching. Given by Mrs. David Keppel
- Giovanni Battista Piranesi. Italian, 1720–78. *View of the Piazza di Monte Cavallo* from “Views of Rome,” etching. Given by Mrs. David Keppel
- Giovanni Battista Piranesi. Italian, 1720–78. *View of the Piazza di Monte Cavallo* from “Views of Rome,” etching. Given by Mrs. David Keppel
- Giovanni Battista Piranesi. Italian, 1720–78. *Interior of the Basilica of S. Paolo fuori le Mura* from “Views of Rome,” etching. Given by Mrs. David Keppel
- Giovanni Battista Piranesi. Italian, 1720–78. *Interior of the Atrium of the Portico di*

- S. Croce in Gerusalemme* from "Views of Rome," etching. Given by Mrs. David Keppel
- Giovanni Battista Piranesi. Italian, 1720–78. *Interior of the Pantheon* from "Views of Rome, etching. Given by Mrs. David Keppel
- Giovanni Battista Piranesi. Italian, 1720–78. *Egyptian Obelisque* from "Views of Rome," etching. Given by Mrs. David Keppel
- Giovanni Battista Piranesi. Italian, 1720–78. *View of the Dogana di Terra in the Piazza di Pietra* from "Views of Rome," etching. Given by Mrs. David Keppel
- Giovanni Battista Piranesi. Italian, 1720–78. *View of the Palazzo Farnese* from "Views of Rome," etching. Given by Mrs. David Keppel
- Giovanni Battista Piranesi. Italian, 1720–78. *View of the Piazza del Popolo* from "Views of Rome," etching. Given by Mrs. David Keppel
- Giovanni Battista Piranesi. Italian, 1720–78. *Column of Marcus Aurelius* from "Views of Rome," etching. Given by Mrs. David Keppel
- Giovanni Battista Piranesi. Italian, 1720–78. *The Fontana dell'Acqua Giulia* from "Views of Rome," etching. Given by Mrs. David Keppel
- Giovanni Battista Piranesi. Italian, 1720–78. *Elevation of an ancient cistern* from "Antiquities of Albano," etching. Given by Mrs. David Keppel
- Giovanni Battista Piranesi. Italian, 1720–78. *Ancient Baths* from "Antiquities of Albano," etching. Given by Mrs. David Keppel
- Francesco (Felice) Polanzani. Italian, 1700–about 1783. After Giovanni Battista Piranesi. *Giovanni Battista Piranesi* from "Opere varie," engraving. Given by Mrs. David Keppel
- Auguste Renoir. French, 1841–1919. *Le Chapeau Epingle*. Given by Mr. and Mrs. Abraham Kamberg
- Aegidius Sadeler. Flemish, 1570–1629. *Landscape with Anglers*, etching. Purchased
- Katsukawa Shuncho. Japanese, active 1780–95. *Viewing Cherry Blossoms*, color woodcut. Given by Arthur B. Schaffner
- Katsukawa Shuncho. Japanese, active 1780–95. *Viewing Cherry Blossoms at Gaten-yama*, color woodcut. Given by Arthur B. Schaffner
- Katsukawa Shuncho. Japanese, active 1780–95. *Crossing a Bridge*, color woodcut. Given by Arthur B. Schaffner
- Katsukawa Shunsho. Japanese, 1726–92. *Two Actors*, color woodcut. Given by Arthur B. Schaffner
- Katsukawa Shunsho. Japanese, 1726–92. *Exchanging Poems*, color woodcut. Given by Arthur B. Schaffner
- Henri de Toulouse-Lautrec. French, 1864–1901. *Ta bouche*, color lithograph. Given by Mr. and Mrs. Abraham Kamberg
- Henri de Toulouse-Lautrec. French, 1864–1901. *Ta bouche*, color lithograph. Given by Mr. and Mrs. Abraham Kamberg

- Utagawa Toyohiro. Japanese, 1773-1828. *The Persimmon Gatherers*, color woodcut. Given by Arthur B. Schaffner
- Utagawa Toyokuni. Japanese, 1769-1825. *Entertainer with Puppets*, color woodcut. Given by Arthur B. Schaffner
- William Turnbull. English, 1922-. *Untitled*, serigraph. Given by John Coplans
- William Turnbull. English, 1922-. *Untitled*, serigraph. Given by John Coplans
- William Turnbull. English, 1922-. *Untitled*, serigraph. Given by John Coplans
- William Turnbull. English, 1922-. *Untitled*, serigraph. Given by John Coplans
- William Turnbull. English, 1922-. *Untitled*, serigraph. Given by John Coplans
- William Turnbull. English, 1922-. *Untitled*, serigraph. Given by John Coplans
- Joseph Mallord William Turner. English, 1775-1851. *Basle* from "Liber Studiorum," etching and mezzotint. Given by the Museum of Fine Arts, Boston
- Joseph Mallord William Turner. English, 1775-1851. *The Bridge in Middle Distance* from "Liber Studiorum," etching, aquatint and mezzotint. Given by the Museum of Fine Arts, Boston
- Joseph Mallord William Turner. English, 1775-1851. And Charles Turner. *Drawing of the Clyde* from "Liber Studiorum," etching and mezzotint. Given by the Museum of Fine Arts, Boston
- Joseph Mallord William Turner. English, 1775-1851. And William Say. *Coast of Yorkshire near Whitby* from "Liber Studiorum," etching and mezzotint. Given by the Museum of Fine Arts, Boston
- Joseph Mallord William Turner. English, 1775-1851. And William Say. *Near Blair Athol, Scotland* from "Liber Studiorum," etching and mezzotint. Given by the Museum of Fine Arts, Boston
- Joseph Mallord William Turner. English, 1775-1851. *Inverary Pier, Lock Fyne, Morning* from "Liber Studiorum," etching and mezzotint. Given by the Museum of Fine Arts, Boston
- Joseph Mallord William Turner. English, 1775-1851. And Thomas Lupton. *Ben Arthur, Scotland* from "Liber Studiorum," etching and mezzotint. Given by the Museum of Fine Arts, Boston
- Joseph Mallord William Turner. English, 1775-1851. And George Clint. *Peat Bog, Scotland* from "Liber Studiorum," etching and mezzotint. Given by the Museum of Fine Arts, Boston
- Joseph Mallord William Turner. English, 1775-1851. And William Say. *Chain of Alps from Grenoble to Chamberi* from "Liber Studiorum," etching and mezzotint. Given by the Museum of Fine Arts, Boston
- Joseph Mallord William Turner. English, 1775-1851. And Thomas Lupton. *Solway Moss* from "Liber Studiorum," etching and mezzotint. Given by the Museum of

- ham Castle, on the Tweed* from "Liber Studiorum," etching and mezzotint. Given by the Museum of Fine Arts; Boston
- Joseph Mallord William Turner. English, 1775-1851. *Raglan Castle* from "Liber Studiorum," etching and mezzotint. Given by the Museum of Fine Arts, Boston
- Joseph Mallord William Turner. English, 1775-1851. And Henry Dawe. *Bonneville, Savoy* from "Liber Studiorum," etching and mezzotint. Given by the Museum of Fine Arts, Boston
- Joseph Mallord William Turner. English, 1775-1851. And Charles Turner. *Inverary Castle and Town, Scotland* from "Liber Studiorum," etching and mezzotint. Given by the Museum of Fine Arts, Boston
- Joseph Mallord William Turner. English, 1775-1851. *Ben Arthur, Scotland* from "Liber Studiorum," etching and mezzotint. Given by the Museum of Fine Arts, Boston
- László Szabó. English, contemporary. *Untitled*, serigraph. Given by John Coplans
- Kitagawa Utamaro. Japanese, 1753-1806. *Girl with a Letter*, color woodcut. Given by Arthur B. Schaffner
- Kitagawa Utamaro. Japanese, 1753-1806. *Girl Holding Bronze Figure of an Ox*, color woodcut. Given by Arthur B. Schaffner
- Kitagawa Utamaro. Japanese, 1753-1806. *Painting*, color woodcut. Given by Arthur B. Schaffner
- Kitagawa Utamaro. Japanese, 1753-1806. *The Lovers Unegawa and Chubei under an Umbrella* from "An Array of Passionate Lovers," color woodcut. Given by Mrs. Arthur B. Schaffner in memory of Louise Stevens Bryant '08
- Kitagawa Utamaro. Japanese, 1753-1806. *Summer Amusement*, color woodcut (triptych). Given by Mrs. Arthur B. Schaffner in memory of Louise Stevens Bryant '08
- Cornelius Vischer. Dutch, about 1619(?)–62. *Gellius de Bouma*, etching. Given by the Museum of Fine Arts, Boston
- Edouard Vuillard. French, 1868-1940. *Interieur aux Tentures Roses III*, color lithograph. Purchased
- Frank Avray Wilson. English, 1914-. *Untitled*, serigraph. Given by John Coplans
- Frank Avray Wilson. English, 1914-. *Untitled*, serigraph. Given by John Coplans
- Frank Avray Wilson. English, 1914-. *Untitled*, serigraph. Given by John Coplans
- Frank Avray Wilson. English, 1914-. *Composition*, serigraph. Given by John Coplans

BOOK ARTS

- Giovanni Battista Piranesi. Italian, 1720-78. *Il campo marzio dell'antica Roma*, Rome, 1762, with forty-seven plates including vignettes. Purchased

SCULPTURE

- Leonard Baskin. American, 1922-. *Homage to the Un-American Activities Committee*, bronze. Purchased
- Leonard Baskin. American, 1922-. *Seated Man with Owl*, cherry. Purchased
- Lee Bontecou. American, 1931-. *Untitled Construction*, canvas and wire. Purchased with the gift of the Chace Foundation, Inc.
- Tullio Lombardo. Italian, about 1455-1532. *Bust of a Young Woman*, bronze. Purchased
- Robert Mallary. American, 1917-. *Prison Yard*, composition stone. Purchased from the Eleanor Lamont Cunningham '32 Fund
- Ewald Mataré. German, 1887-. *Grazing Cow*, bronze. Purchased
- Mexican, Tarascan (Nayarit), 300-700 A.D. *Seated Female Figure*, painted terra cotta. Given by Dr. and Mrs. Malcolm W. Bick

TEXTILES

- Flemish, late sixteenth or early seventeenth century. *The Hunt*, wool, silk and linen (tapestry). Given by Elizabeth Loring Power '25
- Italian, seventeenth-eighteenth century. *Chasuble*, velvet and satin. Given by Herman W. Block
- Persian (Kerman), late nineteenth or early twentieth century. *Carpet*, knotted wool. Given by Mr. and Mrs. Thomas H. Laine (Mary Corbet '16)
- Spanish, sixteenth to eighteenth century. *Panel*, embroidered and appliqued velvet. Given by Herman W. Block
- Probably Spanish, seventeenth century(?). *Sleeved Dalmatic*, velvet and cloth with gold galloon. Given by Herman W. Block

CERAMICS

- Chinese (Ch'ing), about 1830-40. *Vase*, porcelain. Given by Mrs. Andrew B. McClary (Mary Martha Armstrong '20)
- English (Chelsea), 1758-59. *Plate*, porcelain. Given by Mr. and Mrs. Stanley Marcus
- English (Chelsea-Derby or Derby), 1765-75. *Pair of Figures*, porcelain. Given by Mr. and Mrs. Stanley Marcus
- English (Crown-Derby), 1800-10. *Dinner Service* (ninety-three pieces), porcelain. Given by Mr. and Mrs. Stanley Marcus
- French (Sèvres), 1771-74(?). *Pair of Compotes*, porcelain with ormolu mounts. Given by Mr. and Mrs. Stanley Marcus

VARIA

- African, Belgian Congo (Batongo), twentieth century. *Weaving Pulley*, wood. Given by Mr. and Mrs. Raymond Myrer

- African, Ivory Coast (Baulé), twentieth century. *Weaving Pulley*, wood. Given by Mr. and Mrs. Raymond Myrer
- African, Ivory Coast (Baulé), twentieth century. *Weaving Pulley*, wood. Given by Mr. and Mrs. Raymond Myrer
- African, Ivory Coast (Baulé), twentieth century. *Weaving Pulley*, wood. Given by Mr. and Mrs. Raymond Myrer
- African, Ivory Coast (Baulé or Guro), twentieth century. *Weaving Pulley*, wood. Given by Mr. and Mrs. Raymond Myrer
- African, Ivory Coast (Baulé or Senufo), twentieth century. *Weaving Pulley*, wood. Given by Mr. and Mrs. Raymond Myrer
- African, Ivory Coast (Baulé or Senufo), twentieth century. *Weaving Pulley*, wood. Given by Mr. and Mrs. Raymond Myrer
- African, Ivory Coast (Guro), twentieth century. *Weaving Pulley*, wood. Given by Mr. and Mrs. Raymond Myrer
- African, Ivory Coast (Guro), twentieth century. *Weaving Pulley*, wood. Given by Mr. and Mrs. Raymond Myrer
- African, Liberia (Dan), twentieth century. *Mask*, wood. Given by Dr. Hyla S. Watters '15
- African, Liberia (Dan), twentieth century. *Mask*, wood. Given by Dr. Hyla S. Watters '15
- African, Liberia (Mano), twentieth century. *Mask*, wood and fur. Given by Dr. Hyla S. Watters '15
- African, Liberia, twentieth century. *Spoon*, wood. Given by Dr. Hyla S. Watters '15
- African, Sierra Leone (Mende), twentieth century. *Helmet Mask*, wood. Given by Gwendolen M. Carter
- Chinese (Shang), 1515–1028 B.C. *Horned Owl*, jade. Given by Mr. and Mrs. Ivan B. Hart
- Chinese (Shang), 1515–1028 B.C. *Flying Bird*, jade. Given by Mr. and Mrs. Ivan B. Hart
- Chinese (Shang), 1515–1028 B.C. *Long-crested Bird*, jade. Given by Mr. and Mrs. Ivan B. Hart
- Chinese (Early Chou), 1122–771 B.C. *Long-crested Bird*, jade. Given by Mr. and Mrs. Ivan B. Hart
- Chinese (Late Chou), 403–221 B.C. "Pi," jade. Given by Mrs. and Mrs. Ivan B. Hart
- Chinese (Han), 205 B.C.–A.D. 220. *Pair of Shroud Weights: Pair of Reclining Pigs*, jade. Given by Mr. and Mrs. Ivan B. Hart
- South Dutch New Guinea (Asmat), twentieth century. *Ceremonial Prow from a Soul Boat*. Given by Mr. and Mrs. Stanley Marcus

Donors of Objects

FOR THE USE OF THE MUSEUM AND DEPARTMENT

The names of all whose gifts were received prior to July 1, 1959, will be found in preceding numbers of the *Bulletin*.

- American Institute of Architects
Austrian Consulate General
Belgian Government Information Center
Mrs. Roger Williams Bennett
(Margaret Rand Goldthwait '21)
Dr. and Mrs. Malcolm W. Bick
Herman W. Block
Serviço do patrimonio historico e artistico nacional, Brazil
Mrs. Martha M. Breakey
Carnegie Corporation of New York
Mrs. Edward T. Chase (Ethelyn Atha '44)
Mr. and Mrs. Ralph F. Colin
(I. Georgia Talmey '28)
John Coplans
Priscilla Cunningham '58
Mrs. John S. Dalrymple (Bernice Barber '01)
Mrs. Donald F. Fenn
Ford Foundation
Norman L. Goldberg
Mr. and Mrs. Robert Halsband
(Ruth-Alice Norman '22)
*Mr. and Mrs. Richard C. Harrison
(Ruth Leonard '10)
Mr. and Mrs. Ivan B. Hart
Henry-Russell Hitchcock
Philip Hofer
Isabella Stewart Gardner Museum
Mrs. J. Herbert Johnson (Rachel Dearborn Harris '09)
Mr. and Mrs. Abraham Kamberg
Mr. and Mrs. Walter Kamys
Mr. and Mrs. R. Keith Kane
(Amanda Stewart Bryan '27)
Ruth Wedgwood Kennedy
Mrs. David Keppel
Mr. and Mrs. Thomas H. Laine
(Mary Corbet '16)
Mrs. Edwin H. Land
Mrs. Andrew B. McClary (Mary Martha Armstrong '20)
E. A. G. Manton
Mr. and Mrs. Stanley Marcus
Wendy Marcus '60
Mr. and Mrs. Seymour Meyer (Carol Isabel Rubin '36)
Mrs. Lowell Haines Milligan
(Katherine A. Bryan '20)
Eleanor Mitchell M.A. '36
Museum of Fine Arts, Boston
National Gallery of Art
Mrs. Juan Nazarian (Ruth Hammond William '20)
Newark Museum Association
Dorothy Ochtman '14 (Mrs. William A. Del Mar)
Elizabeth Loring Power '25
Henry Rothman
Arthur B. Schaffner
Mrs. Arthur B. Schaffner in memory

Count Anton Seilern
M. Caroline Shillaber '30
Mrs. Maurice Stone
Helen Terry '21
Eugene Victor Thaw
Virginia Museum of Fine Arts

Wadsworth Atheneum
Mr. and Mrs. Arthur Wiesenberger
Yale University, Department of
History of Art
Anonymous

Donors of Funds

FOR THE USE OF THE MUSEUM AND DEPARTMENT

The names of all whose gifts were received prior to July 1, 1959, will be found in the *Bulletin* Nos. 37, 38 and 39.

The Chace Foundation, Inc.
Mrs. Edward T. Chase (Evelyn
Atha '44) Class of 1917
*Mrs. Charles C. Cunningham
(Eleanor Lamont '32)
Henry R. Hope
John C. Hover

*Contributed \$1000 or more

Mrs. J. Herbert Johnson (Rachel
Dearborn Harris '09)
*Mrs. Sigmund W. Kunstadter
(Maxine Helene Weil '24)
Mr. and Mrs. Thomas H. Laine
(Mary Corbet '16)
Mrs. Edwin H. Land
*Mr. and Mrs. Edwin H. Land
Mr. and Mrs. Charles A. Lindbergh
(Anne Spencer Morrow '28)
Charlotte R. Partridge
*Adeline F. Wing '98
*Caroline R. Wing '96
Anonymous, in memory of Jane
Banning Bartley '17
Anonymous

